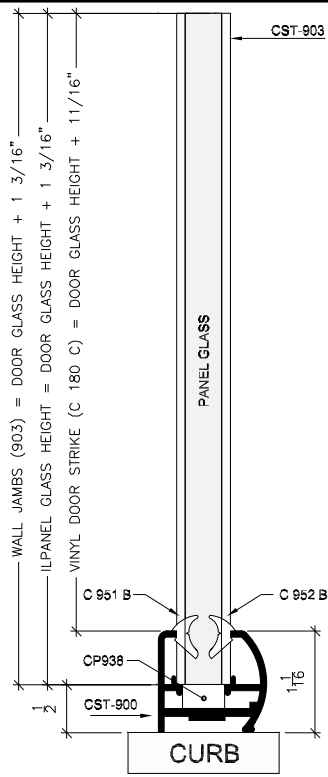


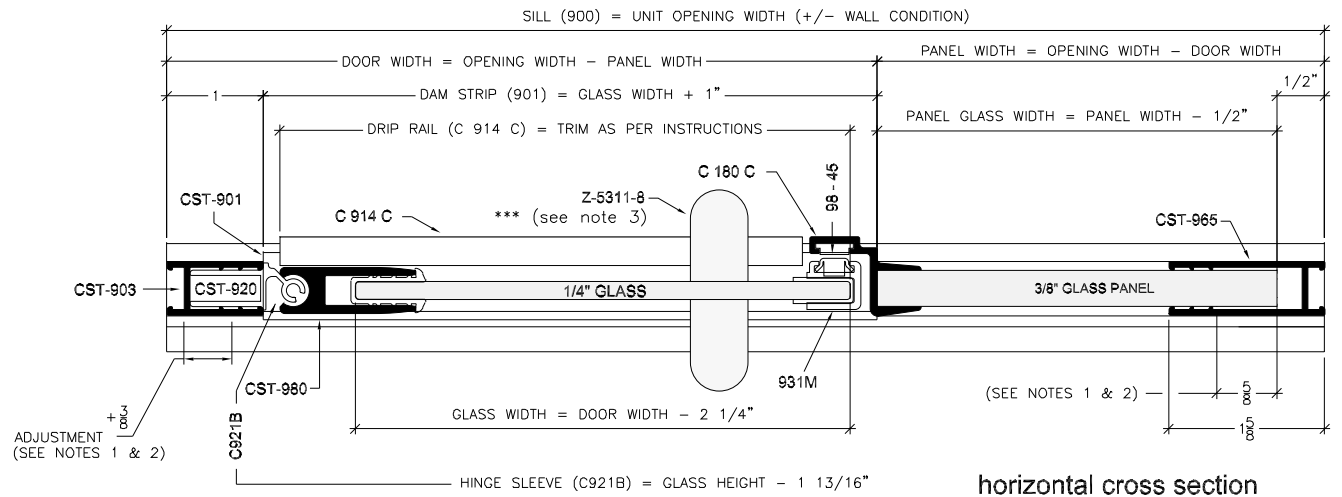
Door Panel
vertical cross section



Inline Panel
vertical cross section

NOTES:

1. FORMULAS ARE BASED ON A MINIMUM WIDTH OPENING. WHEN MEASURING OPENING WIDTHS, ALWAYS CHECK FOR OUT OF PLUMB WALL CONDITIONS.
2. STANDARD DOOR WIDTH ADJUSTMENT IS (+) ONE INCH. 3/8" OF AN INCH IS GAINED BY ADJUSTING (TELESCOPING) THE HINGE METAL (920) WITHIN IT'S WALL JAMB FOR A 3/8" GAIN. AN ADDITIONAL 5/8" CAN BE GAINED BY ADJUSTING (TELESCOPING) THE INLINE PANEL GLASS 5/8" WITHIN IT'S RESPECTIVE WALL JAMB (965).
- *** 3. WHEN USING C-PULL HANDLES (Z-5311-8), PLEASE REFER TO GLASS PANEL PROCESSING SHEET FOR HOLE SIZE AND LOCATIONS. PROCESSING SHEET FOR HOLE SIZE AND LOCATIONS.



horizontal cross section

Series	Unit Configuration
ILLUSION	Frameless Door w/ 1 Inline Panel (965)



Coastal Industries Inc.